



Urban

Marcus Moss
Sales Associate
(801) 660-0914

Janie Mathis
New Home Specialist
(801) 456-2476

Matisse - 3 Bed | 2.5 Bath | 2 - Car Garage | 1,852 Finished SF | 2,748 Total SF



The Matisse plan knows how to deliver on space for everyone. Upon entering this home, the spacious foyer with private half bath and optional coat/mud area give plenty of space to receive guests while having a place to put things away. The open floorplan allows for plenty of space for whatever you could want with a great room, opening onto the kitchen, dining and flex space. Upstairs offers a gracious laundry room, two secondary bedrooms and ample full bath. The primary suite makes the ultimate sanctuary with a large room, private primary bath and generous walk-in closet anyone could enjoy filling.

*Floorplans and renderings are conceptual drawings and may vary from actual plans and homes as built. Options and features may not be available on all homes and are subject to change without notice. Dimensions are approximate. Actual homes may vary from photos and/or drawings which may show upgrades and may not represent the lowest-priced homes in the community. 3/05/2026



garbetthomes.com

(801) 396-9882



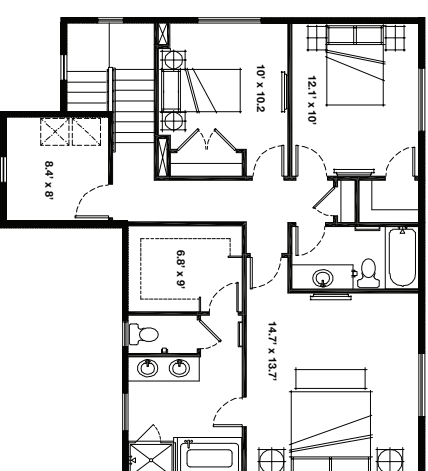
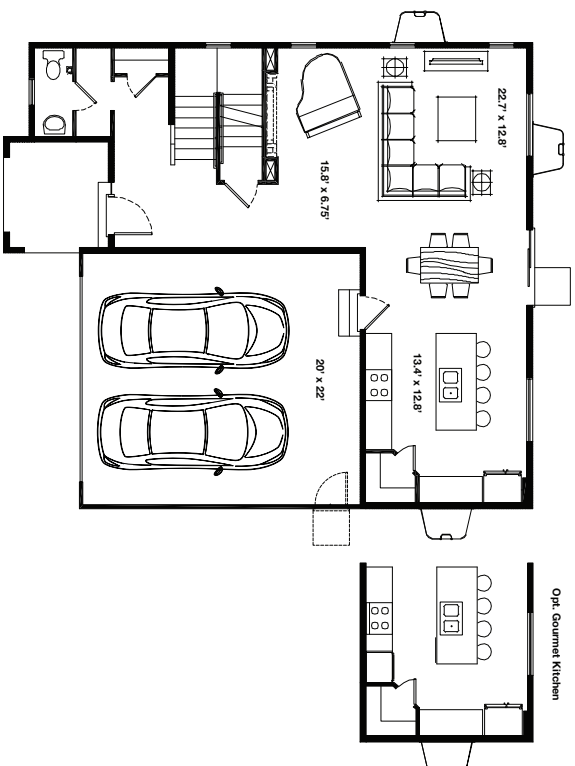
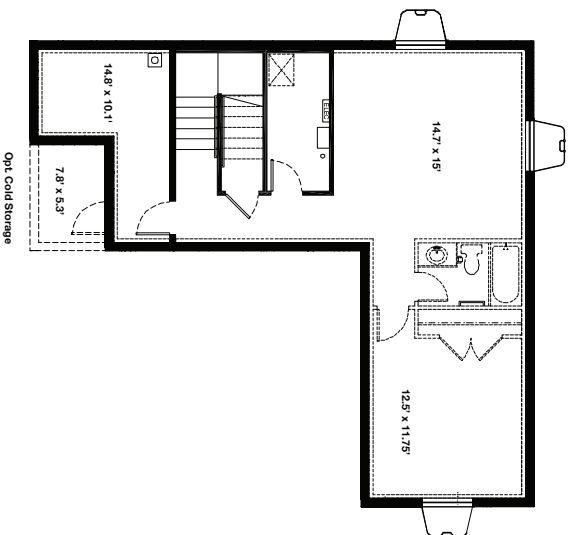


Urban

Marcus Moss
Sales Associate
(801) 660-0914

Janie Mathis
New Home Specialist
(801) 456-2476

Matisse - 3 Bed | 2.5 Bath | 2 - Car Garage | 1,852 Finished SF | 2,748 Total SF



*Floorplans and renderings are conceptual drawings and may vary from actual plans and homes as built. Options and features may not be available on all homes and are subject to change without notice. Dimensions are approximate. Actual homes may vary from photos and/or drawings which may show upgrades and may not represent the lowest-priced homes in the community. 3/05/2026